

# How We Can Support

Team STEP





# About STEP

Sapporo Transnational Expansion and Partnership

---

- Established in October 2024
- One-Stop Business Support Center for Foreign Businesses
- 350 Business Consultations  
(As of Apr. 2026)

# STEP's Core Function

---



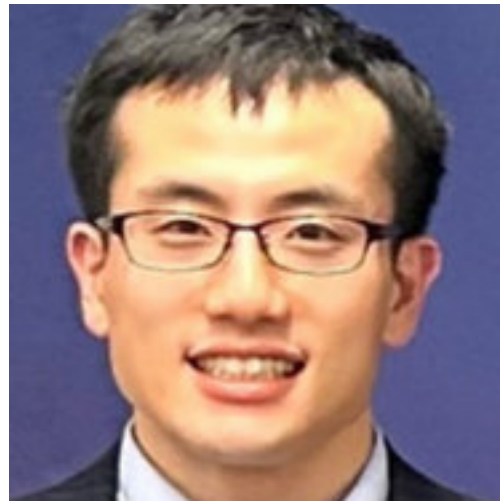
Support for  
administrative  
procedures

Support for  
business matchmaking



# Team STEP

---



Takashi ONO



Kohei TADAKI



Sujin HONG



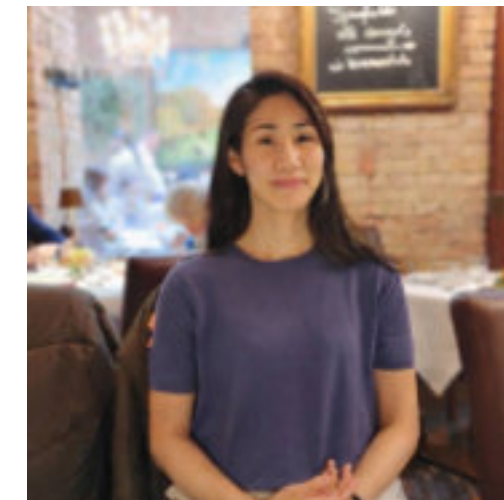
Seiko MIURA



Takahiro ITO



Erika SUZUKI



Sayaka SPEIRS



Thiri WinThant

---

# Your Journey to Sapporo



- Tailored support based on your specific technology and business matching needs
- Support your site visit with available subsidies

- Support you from day one and connect you to the local ecosystem
- Post-meeting feedback and strategic suggestions

- Free support for company incorporation and legal matters
- Guidance on office setup subsidies

- Ongoing business support after establishment

And more

# Pre-Entry Consultation

We provide:

- Carefully understand your technologies and Sapporo expansion needs
- Explore collaboration opportunities with local companies through deep industry expertise



# On-site Visitation

## A Comprehensive Support System for Foreign Companies



# Entity Setup

Free Consultation on  
the Following Challenges...

- Obtaining a visa
- Registration procedures
- Tax procedures
- And more...

) In English

Subsidy for Office Rent

(Especially for IT, Semi-conductor, etc...)

Max. 2.5 million Yen



# Post-Incorporation Support



# Key Partner Facilitated by STEP



# Available Subsidies

1€=187 Yen(As of Apr. 2026)

For Site Visits to Sapporo

Max. 500,000 Yen

Approx. 2,750€

Including Transportation fee  
(in Sapporo metropolitan area)  
Accommodation fee, and professional interpreter fees

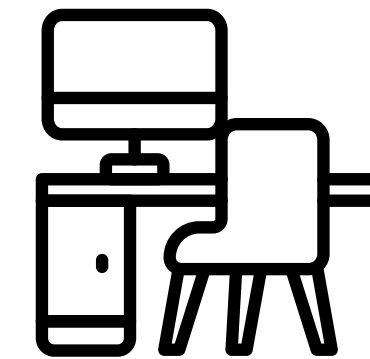


For Foreign Companies Setting Up Offices

Max. 2.5 million Yen

Approx. 13,400€

Especially for IT&Creative, Health and Medical,  
GX&Finance and Semiconductor industries  
Rental Support: 50% coverage for 6 months  
Professional Consultation: 50% coverage



We are ready to assist you

# Contact STEP

Website

LinkedIn



[contact@sapporo-step.global](mailto:contact@sapporo-step.global)

